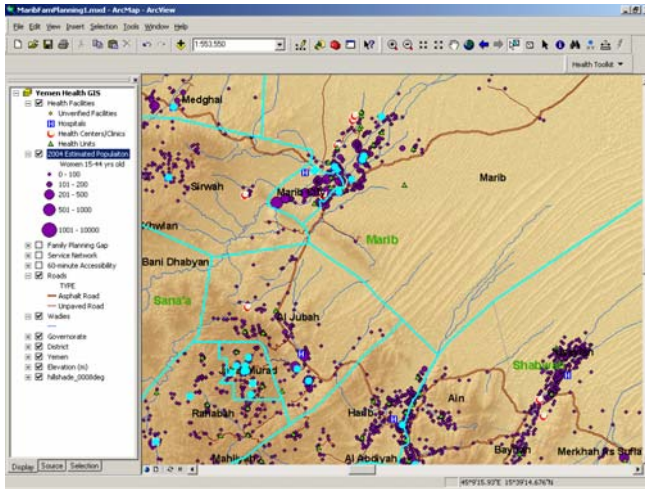
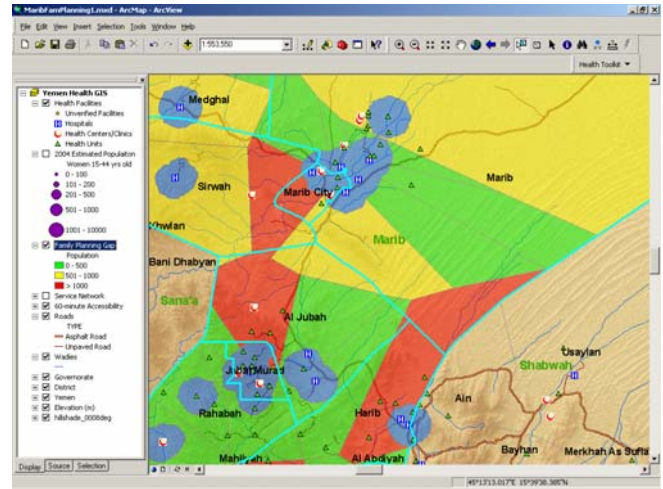


# Yemen Health Information System: Using Data for Decisions

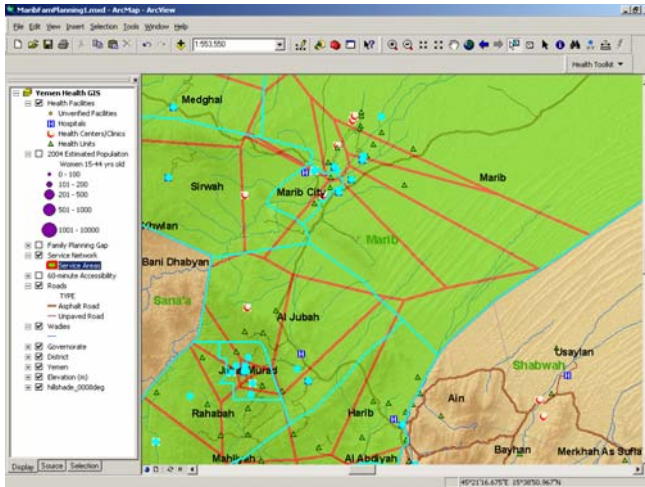
## Health GIS Sample Analysis: Family Planning Services Availability, Accessibility, and Gaps in the Marib Governorate



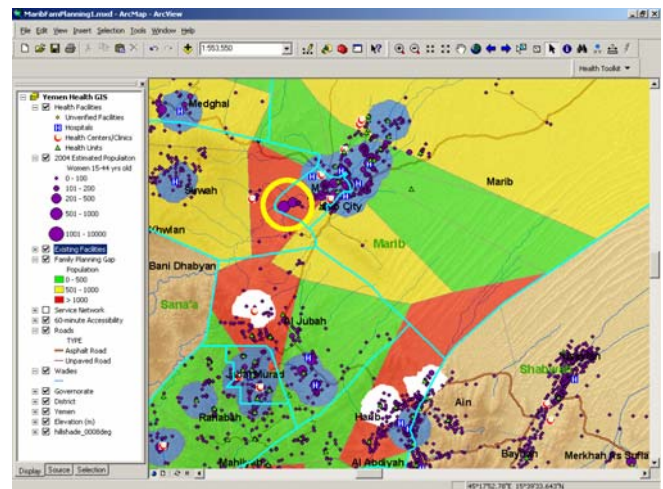
**Step 1:** Plot settlement populations by size (PURPLE points) and identify health facilities with family planning services with the *Facility Survey Analyzer* (LT BLUE points)



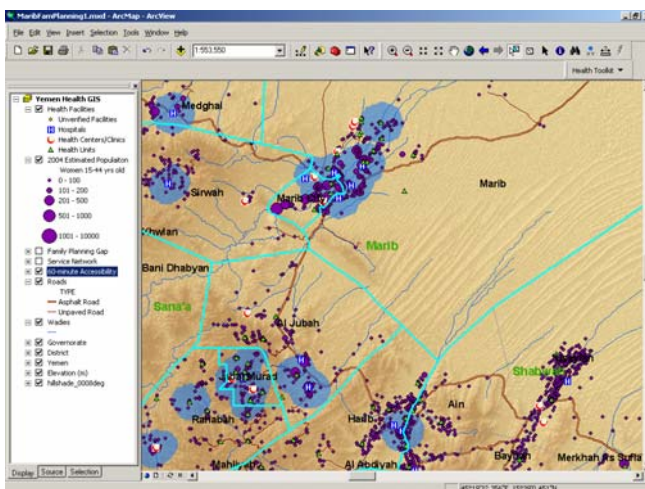
**Step 4:** Analyze population-weighted gaps in family planning coverage and target prioritized areas or health facilities for intervention (RED vs. YELLOW OR GREEN areas) using the *Healthcare Gap Analyzer*.



**Step 2:** Analyze the family planning services network by dividing area according to closest proximity to service provider (LT GREEN area) using *Service Network Provider* tool.



**Step 5:** Evaluate family planning gaps compared to an analysis of 60-minute accessibility coverage for services added to user-selected existing facilities (WHITE area). Also evaluate initiating services at a new facility location (area encircled in YELLOW highlighting).



**Step 3:** Analyze 60-minute walking accessibility/coverage area (BLUE) using the *Facility Accessibility Mapper*.

**Results:** Adding family planning services to the two health facilities highlighted (WHITE area) appears worthwhile for rapid enhancement of the family planning coverage area. Additionally, evidence-based justification for construction of a new health facility based on family planning coverage needs can be visualized by identifying a new location and identifying its potential population served (area encircled in YELLOW highlighting).

As a result, Governorate Health Office officials can more efficiently target limited resources to provide new family planning services at select existing facilities (WHITE area). In addition, duplication in adequate family planning services coverage area (overlapping LT BLUE areas) may be revealed and could warrant relocation and/or training of health care providers in facilities employing new family planning service capacity. Tracking family planning resources and eliminating duplication in coverage could result in significant health care cost savings while at the same time influencing population dynamics and use of responsible practices. In addition, potential health facility site locations or areas that would greatly benefit from education campaigns can be identified also (area encircled in YELLOW highlighting).